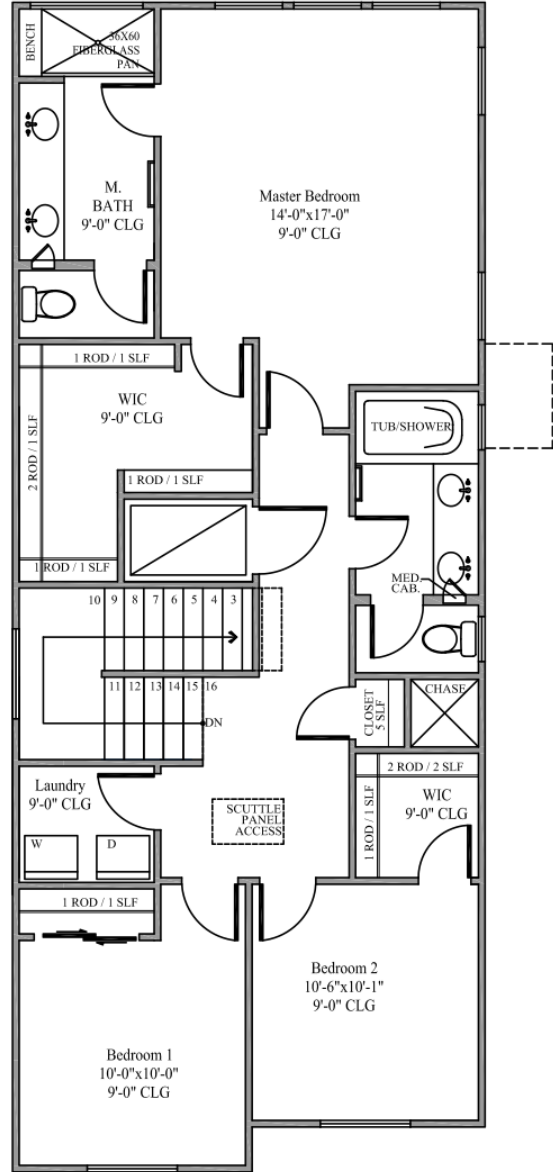
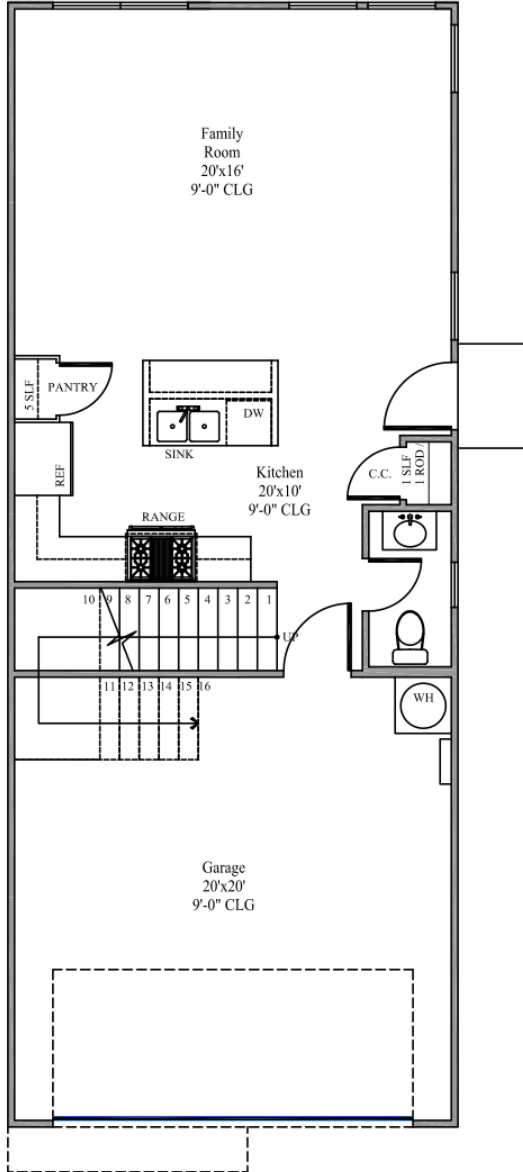


THE CULEBRA CREEK

TOTAL LIVING AREA: 1,626 SF



* Prices, plans, dimensions, features, specifications, materials, and availability of homes or communities are subject to change without notice or obligation. Illustrations are artist depictions only and may differ from completed improvements and may change without notice. Figures reflecting size, square footage, and other dimensions are estimates; actual construction may vary. Size/square footage and price of your home may vary based on bonus rooms and options selected.



THE CULEBRA CREEK

Elevation A



Elevation B



* Prices, plans, dimensions, features, specifications, materials, and availability of homes or communities are subject to change without notice or obligation. Illustrations are artist depictions only and may differ from completed improvements and may change without notice. Figures reflecting size, square footage, and other dimensions are estimates; actual construction may vary. Size/square footage and price of your home may vary based on bonus rooms and options selected.



CASINAS @ THE HEIGHTS

CASINA CREEK

• H O M E S •

EXCLUSIVE FEATURES

- Highly Desirable Alamo Heights Location
- World Class Shopping, Dining and Entertainment
- Distinguished Alamo Heights Independent School District

HOUSEWORKS

- Fiberglass Insulation Provides Insulative Values of R-13 in Exterior Walls, R-38 in Ceilings and R-19 in Two Story Floor Joists Above Garages
- LoweE3 Windows Provide Superior Insulation and Protect Against Harmful Ultraviolet Rays
- Vinyl Window Frames are Welded and Thermally Fused to Ensure Maximum Strength and Reduce Infiltration of Air, Water and Noise.
- Radiant Barrier Roof Decking Blocks Heat from the Attic and Reduces Monthly Utility Bills
- 16 SEER High Efficiency HVAC System with Puron™ Refrigerant is Energy Efficient and Environmentally Friendly
- Merv10 Media Filter is Endorsed by the American Lung Association Health House
- Jumper Ducts Provide Proper Air Balance in all Bedrooms
- Honeywell Programmable Wifi Thermostats Ensure Savings for all Schedules and Temperatures
- Zip System and Thermo-Ply Sheathing on all Exterior Walls
- “Tubes-in-the-Walls” Home Team Taexx Pest Control System
- Low VOC Paint on Interior Walls and Ceilings
- PEX™ Plumbing System Distributes Water Quietly and Efficiently

INTERIOR FEATURES & KITCHEN

- Cabinetry with 42” Uppers with Crown Molding
- Decorative Quartz Countertop
- Ceramic Subway Tile Backsplash
- Durable Wood Look Tile Flooring
- GE Stainless Steel Appliances Package
- Free Standing Slide In Range
- Space Saver Microwave
- Energy Star Dishwasher
- Stainless Steel Double Bowl Sink
- Moen® Single Lever Chrome Faucet with Vegetable Sprayer
- 1/3 HP Garbage Disposal
- Water Line for Ice Maker

MASTER & SECONDARY BATHROOMS

- Luxury Master Bath with Frameless Shower Glass
- Private Water Closet in Master Bath
- Steel Tub/ Shower Combination with Subway Ceramic Tile Surround (Secondary Baths)
- Elongated Water Saving Commodes at all Bathrooms
- Cabinetry to Match Kitchen with Medicine Cabinet in Each Full Bath
- Granite/ Marble Vanity Top with Double Integral Bowls
- Moen® Satin Nickle Lever Faucet at Vanity
- Porcelain Pedestal Sink in Powder Room
- 7 x 26 Wood Look Tile Floor

* Prices, plans, dimensions, features, specifications, materials, and availability of homes or communities are subject to change without notice or obligation. Illustrations are artist depictions only and may differ from completed improvements and may change without notice. Figures reflecting size, square footage, and other dimensions are estimates; actual construction may vary. Size/square footage and price of your home may vary based on bonus rooms and options selected.



CASINAS @ THE HEIGHTS

CASINA CREEK

• H O M E S •

DETAILS THAT MATTER

- Rounded Corners Throughout (windows excluded)
- Orange Peer Texture on Walls and Ceilings
- Wood Look Tile Floor 1st Floor
- 5 Panel Equal Interior Doors
- 5 ¼ Square Edge Baseboards and 3 ¼ Square Edge Door Casing
- Elegant Light Package
- Lever Door Hardware by Kwikset™
- 4 CAT5e Phone Jacks and 4 RG6 Cable Jacks
- Combination Smoke and Carbon Monoxide Detectors
- Utility Room with Shelf and Rod Above Laundry Area
- Wood Closet Shelving with Closet Rods
- Home Security System Pre-Wire with Perimeter Door Contacts, Siren, One Keypad and One Glass Break Sensor and One Motion Detector
- Lighting at Each Exterior Door
- Insulated Steel Garage Door with Decorative Panels and Windows
- Garage Walls Textures and Painted
- Included Garage Door Opener
- 2 Hose Bibs (locations per plan)
- Privacy Fence to Rear Corners of Home with Gate

EXCLUSIVE TO CASINA CREEK HOMES

- You are Involved in the Building Process
- Detailed Quality Inspection Process
- Pre-Construction Orientation
- Pre-Drywall Orientation
- Post Move-In Follow Up
- Area Specific Engineering Utilizes Geotech Reports to Design Stronger Post Tension Foundations

EXTERIOR FEATURES

- Predesigned Exterior Finishes
- Video Doorbell Button
- Craftsman Front Entry Door
- Security Deadbolt Lock and Digital Wifi Handleset by Kwikset™
- Cemplank Siding and Fascia by James Hardie™ with a 25 Year Warranty
- James Hardie™ soffit and Trim with a 15 Year Warranty
- Divided Light Front Windows
- Vinyl Frame Windows with Tilt in Sash for Easy Cleaning
- ½ Screens on all Operable Windows
- LowE2 Glass, 6080 Sliding Glass Door at Rear of Home
- Casina Creek Homes Warranty Program Backed by Home of Texas Warranty.
- 10 Year Structural
- 2 Year Mechanical
- 1 Year Workmanship
- Name Brand Manufactures Warranties
- Home Buyers' Guide Takes You Step by Step Through the Construction, Warranty and Maintenance Process

OUR WRITTEN GUARANTEE

* Prices, plans, dimensions, features, specifications, materials, and availability of homes or communities are subject to change without notice or obligation. Illustrations are artist depictions only and may differ from completed improvements and may change without notice. Figures reflecting size, square footage, and other dimensions are estimates; actual construction may vary. Size/square footage and price of your home may vary based on bonus rooms and options selected.

